

Cato the Cat

Cut him out and fold him up.
His eyes will follow you
around the room...
It's seriously spooky!

1. Cut out Cato. Cut around just inside the dotted blue line. (Keep the outside for the instructions.)
2. Cut the two slots for tabs A & B
3. Fold along the dotted red lines
4. Tape the tabs C, D & E behind, (on the back side of the picture)
5. Tuck tabs A & B into slots

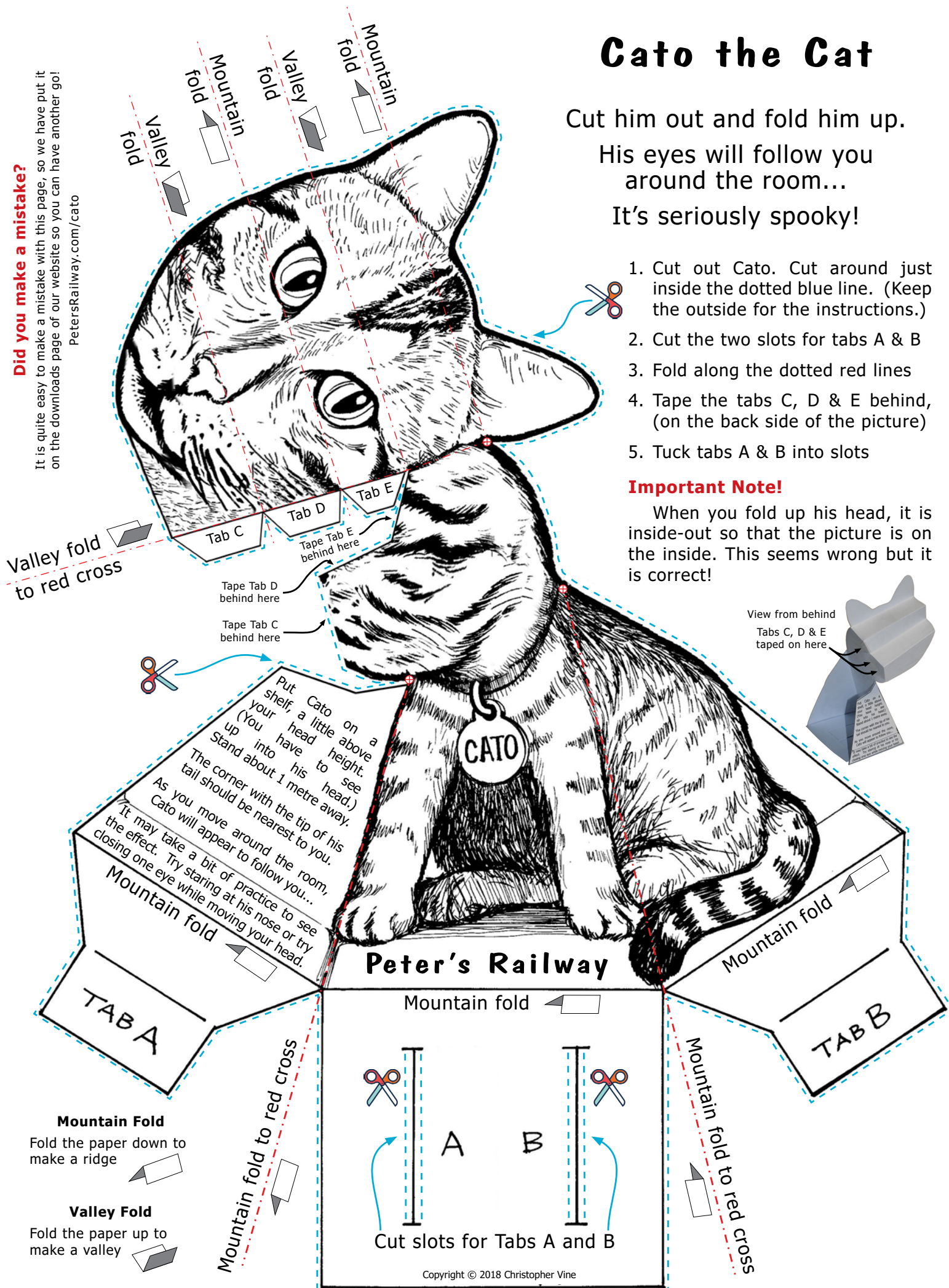
Important Note!

When you fold up his head, it is inside-out so that the picture is on the inside. This seems wrong but it is correct!

Did you make a mistake?

It is quite easy to make a mistake with this page, so we have put it on the downloads page of our website so you can have another go!

PetersRailway.com/cato



Valley fold to red cross

Tape Tab D behind here
Tape Tab C behind here
Tape Tab E behind here

View from behind
Tabs C, D & E taped on here

Put Cato on a shelf, a little above your head height. (You have to stand into his head.) Stand about 1 metre away. The corner with the tip of his tail should be nearest to you. As you move around the room, Cato will appear to follow you... It may take a bit of practice to see the effect. Try staring at his nose or try closing one eye while moving your head.

Peter's Railway

Mountain Fold
Fold the paper down to make a ridge

Valley Fold
Fold the paper up to make a valley

Mountain fold

Cut slots for Tabs A and B